

FJCL State Forum 2002 Classical Art

1. Where is the Parthenon?
A. Rome B. Nice C. Alexandria D. Athens
2. In what century were black figure vases first produced?
A. 8th century b.c. B. 6th century b. c.
C. 5th century b.c. D. 4th century b.c.
3. What style sculpture is the famous Laocoon?
A. Archaic B. Severe Classical C. Hellenistic D. Minoan
4. Nearest to which Roman city would you find the Villa of the Mysteries?
A. Pompeii B. Herculaneum C. Nuceria D. Rome
5. Which emperor build a column to commemorate his victories in Dacia?
A. Augustus B. Domitian C. Trajan D. Caracalla
6. The mosaic of Christ as the good shepherd in the mausoleum of Galla Placida is in _____.
A. Rome B. Ravenna C. Naples D. Piazza Amerina
7. To which Greek sculptor is the marble "Hermes and Dionysus" usually attributed?
A. Phidias B. Lysippos C. Praxiteles D. Myron
8. This German archaeologist was the first to discover Troy.
A. Schliemann B. Blegar C. Doerpfeld D. Meyer
9. Although Hadrian rebuilt the Pantheon, he left the inscription of the original builder on the facade. Who was the original builder?
A. Marcus Aurelius B. Nero C. Tiberius D. Marcus Agrippa
10. Which Roman built the temple of Mars Ultor?
A. Pompey the Great B. Augustus C. Julius Caesar D. Hadrian
11. If you saw an owl on the reverse of a silver coin where would it likely be from?
A. Byzantium B. Athens C. Sparta D. Ephesus
12. This Emperor's arch contains a bas relief panel showing a scene from his triumph over Jerusalem.
A. Titus B. Hadrian C. Constantine D. Septimius Severus
13. What type of columns adorned the interior of the Parthenon?
A. Doric B. Corinthian C. Ionic D. composite
14. Which temple in Athens contained cariatid columns?
A. Temple of Athena Nike B. Erechtheion
C. Hephaeston D. Sanctuary of Artemis

15. Which Roman saw to the building of the Colosseum?
A. Hadrian B. Vespasian C. Augustus D. Nero
16. Whose chryselephantine statue of Zeus was one of the seven wonders of the ancient world?
A. Polycleitus B. Phidias C. Kallikrates D. Lysippos
17. Who brought the broken fragments of sculptures from the Parthenon to England?
A. Sir Arthur Evans B. Lord Carnavaugh
C. Lord Elgin D. Mortimer Wheeler
18. Of what material are the famous Vaphio cups?
A. gold B. silver C. bronze D. pottery
19. Which structure uses "korbeling" technique?
A. Circus Maximus B. Treasury of Atreus
C. Arch of Constantine D. Baths of Titus
20. The famous "Harvester Vase" showing a lively scene of olive harvesting from Minoan times, was discovered at _____.
A. Knossos B. Palaikastro C. Tiryns D. Hagia Triada
21. In which house in Pompeii would you find paintings of Cupids making wine?
A. Vettii B. Caecilius Iucundus
C. Menander D. Silver Wedding
22. What deity's temple was built on the Arx?
A. Apollo B. Minerva C. Juno Moneta D. Saturn
23. What time period do Cycladic idols flourish?
A. 3000 b.c. B. 2500 b.c. C. 1800 b.c. D. 1200 b.c.
24. Who made the Discobolus?
A. Pheidias B. Myron C. Scopas D. Praxiteles
25. What style of vases did Exekias paint?
A. red figure B. black figure C. white ground D. polychrome
26. Who set up the Ara Pacis?
A. Scipio Africanus B. Sulla C. Augustus D. Vespasian
27. Who was the first Roman to mint coins in Rome with his own image on them?
A. Augustus B. Marius C. Sulla D. Julius Caesar
28. Where would you find the Toreador fresco?
A. Herculaneum B. Gades C. Mycenae D. Knossos
29. Of what material was the statue of Jupiter in the temple of Jupiter Optimus Maximus on the Capitoline made?
A. bronze B. gold & ivory C. marble D. terra-cotta

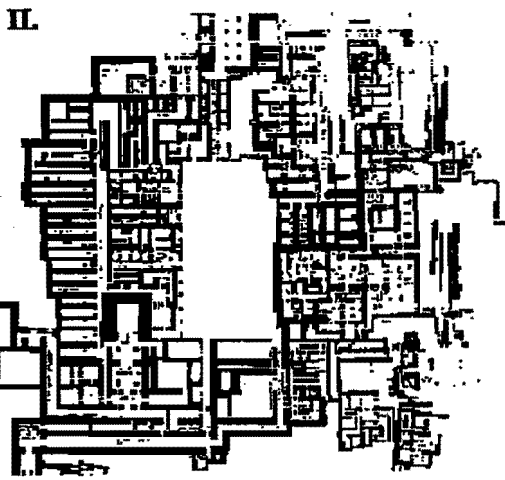
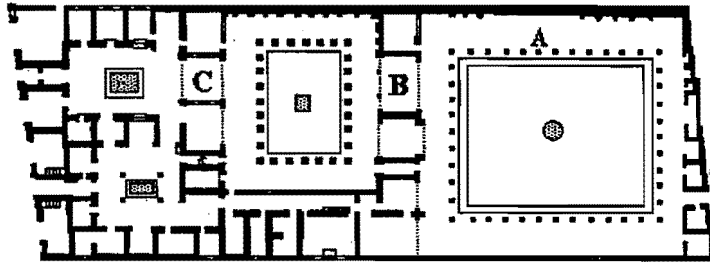
30. Which kind of column would be associated with a continuous frieze around the cella of a temple?
A. Doric B. Ionic C. Corinthian D. Tuscan
31. What is the subject of the frieze around the Altar of Zeus and Athena at Pergamum?
A. Titanomachy B. Gigantomachy C. Amazonomachy D. Trojan war
32. Which style of Pompeian wall painting was characterized by the use of architectural frames and open vistas as if they were windows to an ideal landscape?
A. first B. second C. second & fourth D. first & third
33. Which Roman incorporated a library into his forum?
A. Augustus B. Trajan C. Nerva D. Julius Caesar
34. Who built the Sanctuary of Fortune at Praeneste?
A. Metellus Numidians B. G. Marius
C. Pompey the Great D. Sulla
35. The inscription on the Lapis Niger is *boustrophedon* in style. What does this mean?
A. The characters are of archaic style
B. The characters are written from top to bottom
C. The characters are written from right to left
D. The lines alternate, left to right and then right to left
36. Who erected a triumphal arch between the Temple of Castor and the Temple of Divine Julius?
A. Augustus B. Claudius C. Vespasian D. Domitian
37. Which emperor build the Golden House?
A. Augustus B. Caligula C. Nero D. Domitian
38. What later emperor filled the Golden House with rubble so he could build his baths on top?
A. Titus B. Trajan C. Caracalla D. Diocletian
39. About what date was the Colossus of Rhodes built?
A. 600 b.c. B. 300 b.c. C. 100 b.c. D. 100 a.d.
40. Which of the following is not a feature of a typical Roman temple (not tholos style)?
A. pseudoperipteral B. built on a podium
C. a deep porch D. freestanding columns surrounding the cella
41. The famous mosaic "The Battle of Issus" is generally believed to be a copy of which painter's work?
A. Apelles B. Philoxenos C. Exelcias D. Polygnotus
42. In which temple's pedimental sculpture would you see the battle of the Lapiths and the Centaurs?
A. Zeus at Olympia B. Apollo at Delphi
C. Apollo at Corinth D. Aphaia on Aegina

43. Who painted the Francois Vase?
A. Ergotimos B. Euphronios C. Euthymides D. Kleitias

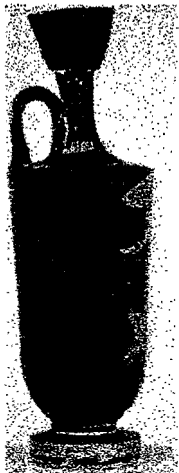
For Questions 44-50, look at illustrations as directed

44. What is the area around A in illustration I called?
A. Exedrae B. Sacrarium C. Peristylum D. Triclinium
45. What work of art (now preserved in the National Museum of Archeology) was found at B in illustration I?
A. The bronze statue of the Faun B. A silver bust of the philosopher Seneca
C. A marble statue of Venus D. A mosaic of the Battle of Issus
46. What room does C in illustration I mark?
A. Cubiculum B. Culina C. Tablinum D. Atrium
47. What archeological site is shown in illustration II?
A. Troy B. Mycenae C. Tiryns D. Knossos
48. What shape vase is illustration III ?
A. Kantharos B. Oinochoe C. Krater D. Lekythos
49. What type of column is in illustration IV ?
A. Doric B. Corinthian C. Ionic D. Composite
50. What is the name for the area marked with α in illustration IV?
A. triglyph B. pediment C. metope D. entasis

I. **House of the Faun**



III.



IV.

